

SAFETY INSTRUCTIONS

- Regularly check nuts and bolts attaching the awning to your vehicle to make sure fastenings are tight and in good condition.
- If using a commercial car wash, remove awning and fixtures to avoid damage.
- Do not use awning or travel cover to hoist, lift or support yourself.
- It is important when mounting to a vehicle, that the mounting brackets supplied are adequately spaced to support the weight of the awning.
- Products applied to a vehicle roof will alter vehicle handling. The manufacturer disclaims all responsibility in relation to accidents due to improper use, incorrect maintenance, or negligence in maintaining fastening hardware.
- This awning will support the Tuatara 180° Adjustable Awning Wall (KC077-083). Attaching different models, or inappropriate weight, could damage frame and will not be covered by warranty.
- If pitching in windy conditions it is advised to find a less exposed location. Park the vehicle so the awning is protected from the wind. Ensure legs are extended and all guy ropes are pegged out correctly. Be aware of dropping branches and other potential hazards. Collapse the awning in strong winds.
- Keep hands free of pivoting frame when opening and closing awning.
- Polyester ripstop canvas is not fire proof, if exposed to flame or high heat sources it can ignite and burn. Always take care when using spirit or gas appliances such as stoves and lanterns near your awning.
- Never drive with awning erected.

ATTACHMENT INSTRUCTIONS

YOUR TUATARA 180° AWNING INCLUDES:

1 x awning with travel cover

2 x heavy-duty L-brackets

4 x mounting plates

8 x M8 x 20mm sets (bolt, nut and washer)

6 x M8 x 55mm sets (bolt, nut and washer)

4 x M8 x 35mm T-bolt sets (bolt, nut and washer)

2 x webbing hooks

5 x guy ropes

5 x pegs

2 x spanner/socket (10mm and 13mm)

You will also need:

1 x person to help attach the awning to the vehicle

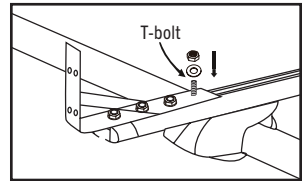
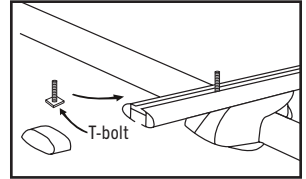
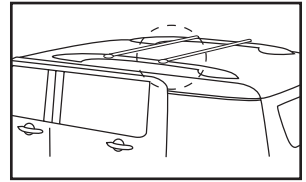
INSTALLATION INSTRUCTIONS

Secure L-brackets to the vehicle

To attach L-brackets to a T-slot crossbar

1. Slide two T-bolts into each crossbar, choosing the size that fits best. Orientate the bolt base for the best fit. Measure the distance required between each awning bracket, this will vary depending on your roof rack.
2. Place the supplied L-bracket on top of your crossbars, with the vertical end facing away from the vehicle.
3. Line up the bolts to the L-brackets. Once aligned, add the washers and nuts and loosely tighten. Repeat with the remaining brackets.

Tip - Ensure vertical faces of L-brackets are aligned before fully tightening.



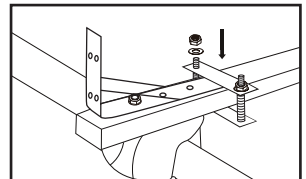
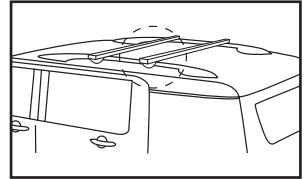
To attach L-brackets to a crossbar using mounting plates

1. Place the supplied L-bracket on top of your crossbars, with the vertical end facing away from the vehicle.

Tip - Ensure vertical faces of L-brackets are aligned before fully tightening.

2. Place a mounting plate above and below the crossbars. Once aligned, use two M8 x 55mm bolts and fully tighten. Repeat with remaining brackets.
3. For extra stability we recommend drilling an M9 hole in your existing crossbar to anchor a point closest to the awning. Fix with an M8 x 55mm bolt.

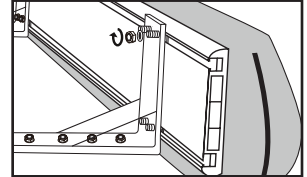
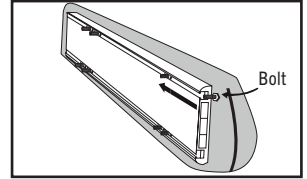
Note - When travelling in rough terrain, mounting brackets can gradually loosen. Regularly check fixings. We recommend T-slot mounting in challenging conditions.



Attach your awning to the L-brackets

1. Slide M8 x 20mm bolts into the awning channel found on the back side of the awning.
2. With a partner, hold awning up to L-bracket and align bolt threads with L-bracket holes on vertical faces.
3. Insert bolts through the L-bracket holes. Once aligned, add the washers and nuts and fully tighten.

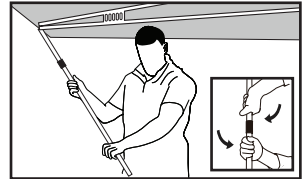
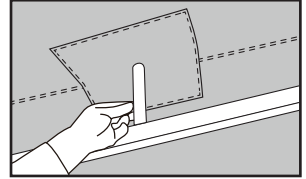
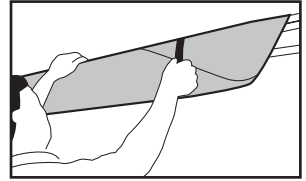
Tip - It is recommended to take a short drive after attaching fixtures. Check on return to see if any further tightening of brackets is necessary. Check fixtures regularly during use.



PITCHING INSTRUCTIONS

1. Unzip the travel cover and fold out of the way. Release the compression straps and carefully unroll.
2. Slowly walk the right hand side of the awning out until it is fully extended. Secure the webbing hook at the furthestmost point of the awning to your roof rack or vehicle. Repeat with left side.
3. Extend the anti-pool risers located on top of the frame.
4. If windy, release the four attached vertical poles and extend. Twist to lock the poles in place.
5. Peg out all guy ropes to ensure the awning remains securely anchored.

Tip - Insert pegs at a 45° angle to ensure the pegs won't pull out.



COLLAPSING INSTRUCTIONS

1. Carefully remove pegs, roll-up the guy ropes, remove excess soil from the pegs and store them in their bag.
2. Twist to unlock the poles and secure back in place.
3. Collapse the anti-pool risers.
4. Release the webbing hooks from the vehicle.
5. Beginning with the left hand side, slowly walk the awning until it is fully closed. Repeat with right side. Roll the awning up, ensuring the compression straps are clear of the frame.
6. Tightly roll up the awning until the compression straps can be secured.
7. Fold back the travel cover and zip to close.

CARE INSTRUCTIONS

PLEASE READ ALL OF THE CARE INFORMATION AND INSTRUCTIONS INCLUDED WITH THIS AWNING BEFORE USING IT FOR THE FIRST TIME.

1. Never store your awning away damp. Should mildew spots appear, brush them off before they become attached. Mildew damage of any kind is not covered by our warranty. **DO NOT** use excess force or other harsh tools to remove soilage from your awning.
2. Like all assets, polyester ripstop canvas awnings require regular care and attention to give the life and service expected. Regular cleaning with an abundance of clean water and a soft brush, especially after exposure to salt water will preserve your awning's life. Do not allow bird droppings, earth or vegetable matter to remain in contact with the fabric. **NEVER USE SOAPS OR DETERGENTS.**
3. Polyester ripstop canvas is not fire proof, if exposed to flame or high heat sources it can ignite and burn. Always take care when using spirit or gas appliances such as stoves and lanterns near your awning.
4. Some products contain chemicals, which can destroy your awnings proofing and cause it to leak. Avoid using aerosol sprays and keep petrol, oil, solvents and other similar fluids away from the fabric. Do not use these inside or around your awning as any damage caused by these is not covered by our warranty.
5. Always remember that your awning is made from cloth, and should not be compared with a house. It is waterproof under normal conditions but in severe weather conditions some water may penetrate. If you apply water proofing to your awning check that you are applying the right one for your awning's polyester ripstop canvas type.
6. Extra pegs and ropes are recommended in stormy conditions. Please note, wind damage is not covered by our warranty. Check and adjust guy ropes and pegs daily.
7. Awning fabrics are not 100% colourfast and some fading will occur naturally, however; this does not affect the performance of the fabric. Do not leave your awning up and unattended for extended periods of time. Awnings are not designed as permanent dwellings. Awnings are guaranteed for normal camping use only.
8. Check all fixtures regularly and tighten when necessary.
9. When rolling up awning, ensure there are no creases or folds in the fabric.

WARRANTY INFORMATION

The warranty period for this awning is found on the packaging and full details are on the Kiwi Camping website - www.kiwicamping.co.nz.

The original purchaser of this product is offered a warranty if during this time period the product fails due to a fault in either materials or workmanship. Service under this warranty is available by returning the product, with your proof of purchase, to where it was purchased. If after inspection it is determined that the product is defective, we will repair or replace it (at our discretion) free of charge. This warranty does not cover misuse, damage caused by accident, storm or wind damage, mildew, neglect, UV degradation and fair wear and tear. Please note, the warranty on this awning will be deemed void if the product is used for any purpose other than a temporary shelter. If the claim is not deemed a warranty or is outside it's warranty period, we can repair the product at a nominal cost.



Distributed by: Aber Living, Hamilton, NZ
www.kiwicamping.co.nz

5739-06/25