

## SAFETY INSTRUCTIONS

- Regularly check nuts and bolts attaching the awning to your vehicle to make sure fastenings are tight and in good condition.
- If using a commercial car wash, remove the aluminium hardshell and fixtures to avoid damage.
- Do not use awning or storage bag to hoist, lift or support yourself.
- It is important when mounting the awning to a vehicle, that all the mounting brackets supplied are adequately spaced to support the weight of the awning.
- When mounting onto a vehicle with a rear canopy, the awning should be mounted to one or the other, not span both vehicle roof and canopy.
- Products applied to a vehicle roof will alter vehicle handling. The manufacturer disclaims all responsibility in relation to accidents due to improper use, incorrect maintenance, or negligence in maintaining fastening hardware.
- This awning will support Tuatara accessory walls (KC077-067 - 2 X 2m Awning Front Wall and Side Wall). Attaching different models, or inappropriate weight, could damage frame and will not be covered by warranty.
- Do not attempt to put up in windy conditions.
- To avoid pooling of water on top of awning, always set up awning with sufficient angle to allow water to run off.

# ATTACHMENT INSTRUCTIONS

## YOUR TUATARA AWNING INCLUDES:

---

1 x awning with travel cover

---

2 x L-brackets

---

4 x mounting plates

---

2 x guy ropes and pegs

---

4 x M8 x 16mm sets (bolt, nut and washer)

---

4 x M8 x 55mm sets (bolt, nut and washer)

---

4 x M8 x 35mm T-Bolt sets (bolt, nut and washer)

---

## You will also need:

1 x adjustable crescent spanner or a 10/13mm spanner

1 x person to help attach the awning to the vehicle

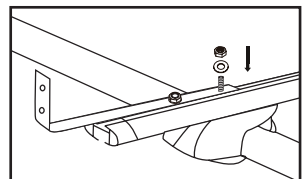
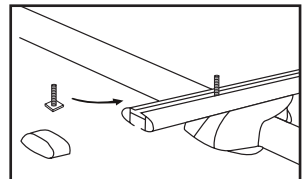
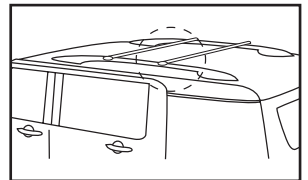
# INSTALLATION INSTRUCTIONS

## Secure L-brackets to the vehicle

### To attach L-brackets to a T-slot crossbar

1. Slide two T-bolts into each crossbar. Orientate the T-bolt base for the best fit.
2. Place the supplied L-bracket on top of your crossbars, with the vertical end facing away from the vehicle.
3. Line up the T-bolts to the L-brackets. Once aligned, add the washers and nuts and fully tighten. Repeat with second bracket.

*Tip - Ensure vertical faces of L-brackets are aligned before fully tightening.*

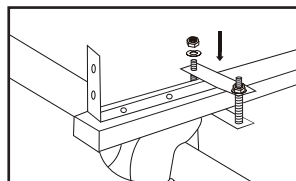
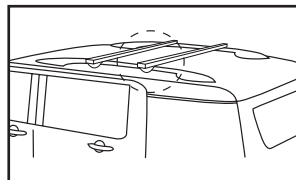


## To attach L-brackets to a crossbar

1. Place the supplied L-bracket on top of your crossbars, with the vertical end facing away from the vehicle.
2. Secure the L-bracket with M8 x 55mm bolt set provided.

*Tip - Ensure vertical faces of L-brackets are aligned before fully tightening.*

3. Place a mounting plate above and below the crossbars. Once aligned, add the washers and nuts and fully tighten. Repeat with second bracket.

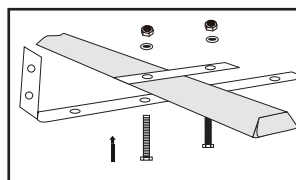
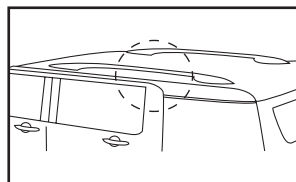


## To attach L-brackets to roof rails

*Note - Not all roof rail profiles will support L-brackets. If unsuitable, crossbars will need to be added.*

1. Place the supplied L-bracket underneath the roof rail, with the vertical end facing away from the vehicle.
2. Place a mounting plate above the roof rail. Once aligned, add the M8 x 55mm bolt set and fully tighten. Repeat with second bracket.

*Tip - Ensure vertical faces of L-brackets are aligned before fully tightening.*

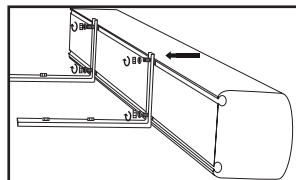
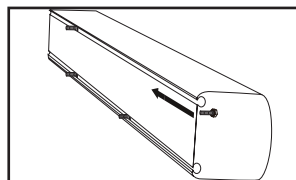


## Attach your awning to the L-brackets

1. Slide the four M8 x 16mm bolts into awning channels, found on the back side of the awning.
2. With a partner, hold awning up to L-bracket and align bolt threads with L-bracket holes on vertical faces.
3. Insert the bolts through the L-bracket holes and tighten the lock nuts with a few turns, without fully tightening.

*Tip - The awning bolts should still be able to move back and forth inside the awning channel.*

4. Ensure the awning is centered between both crossbars, then fully tighten all lock nuts to secure the awning.



*Tip - It is recommended to take a short drive after attaching fixtures. Check on return to see if any further tightening of brackets is necessary. Check fixtures regularly during use.*

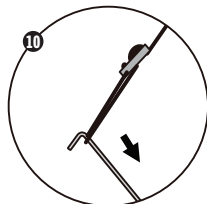
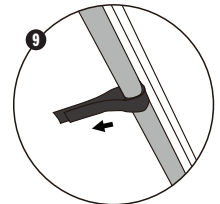
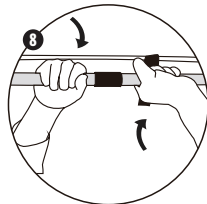
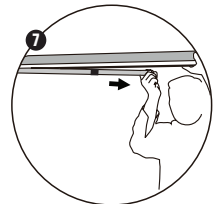
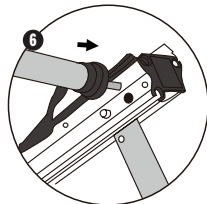
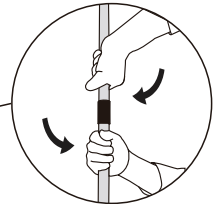
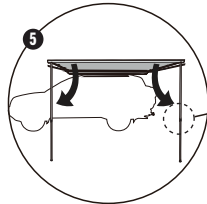
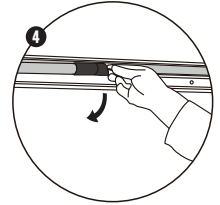
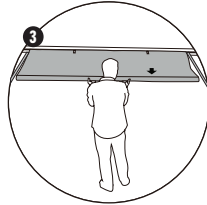
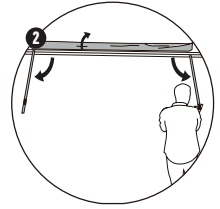
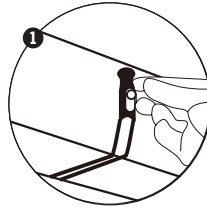
# PITCHING INSTRUCTIONS

1. Release bottom elastic tabs on the aluminium travel cover.
2. Remove the awning from the aluminium travel cover. Lift the awning fabric to access and release the side support poles from the aluminium travel cover. Move the poles out to the sides.
3. Extend the awning out fully. Have someone support the front of the awning.
4. Release the vertical support poles from the U-shape groove at the front of the awning.
5. Extend and twist to lock to the desired height.
6. Insert the side support poles into the corresponding slot on the front frame of the awning.
7. Fully extend the side support poles.
8. Tension the poles until the fabric is taught. Twist to lock.
9. Secure the hook and loop tabs around the poles.
10. Peg out the guy ropes and pole bases ensuring the awning remains securely anchored.

*Tip - Pitch the awning at a slight angle to allow rain run-off.*

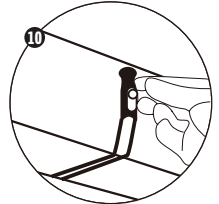
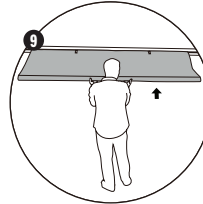
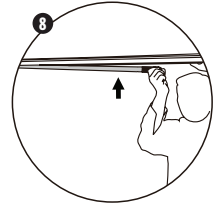
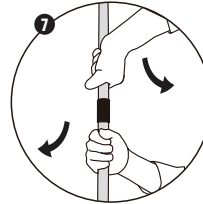
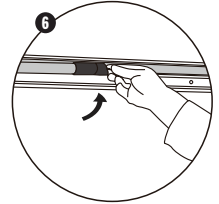
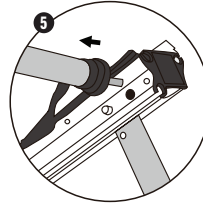
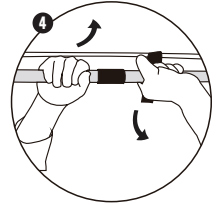
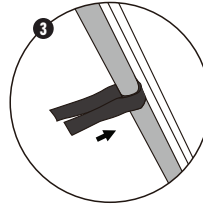
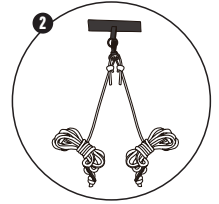
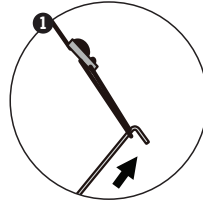
*Tip - To extend poles, twist the poles, not the black joiner.*

*Tip - Insert pegs at a 45 ° angle to ensure pegs won't pull out.*



# COLLAPSING INSTRUCTIONS

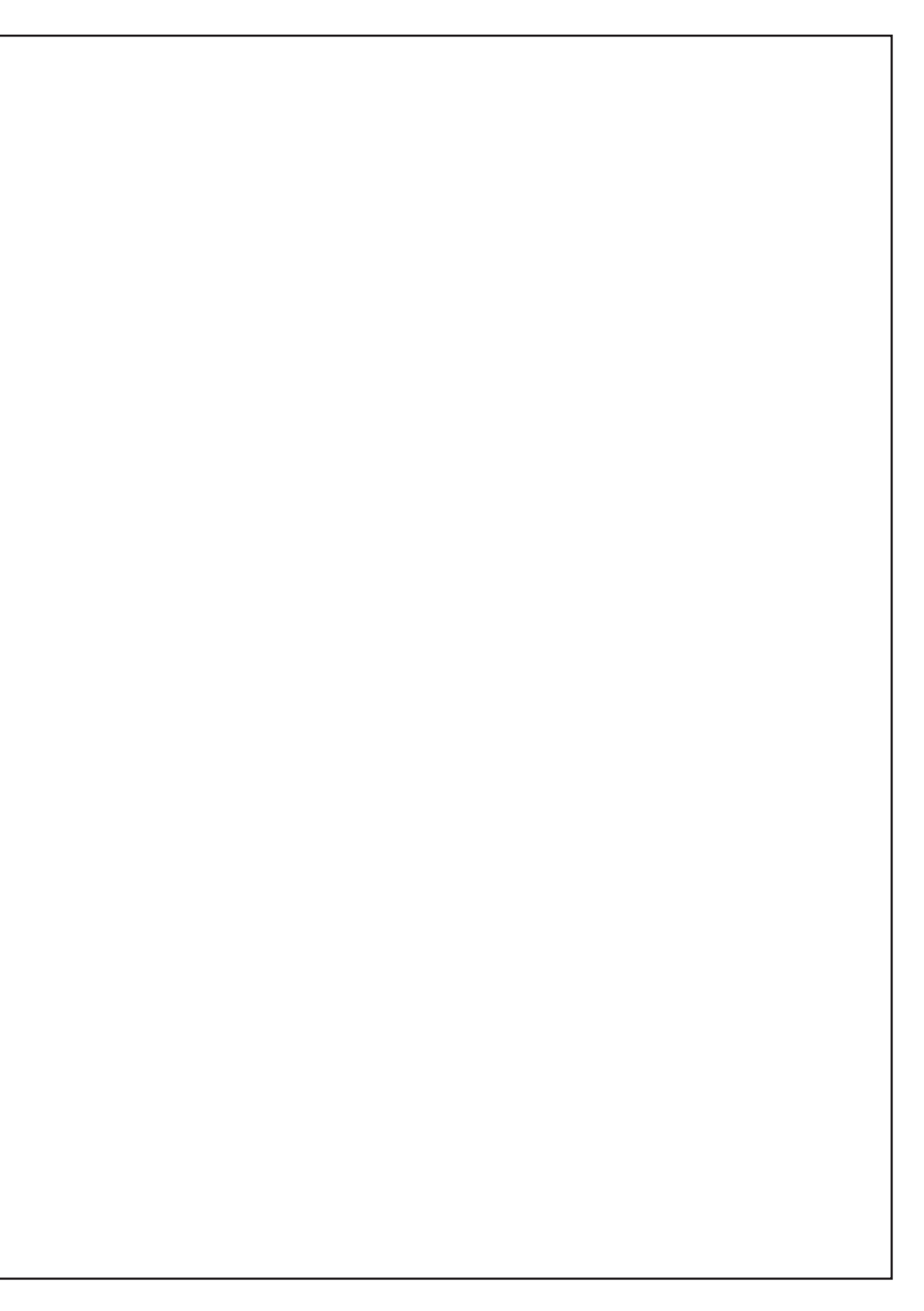
1. Carefully remove pegs, remove excess soil and store them in their bag.
2. Roll up guy ropes and store.
3. Unfasten hook and loop tabs from the poles.
4. Have someone support the front of the awning. Twist to unlock the side support poles.
5. Remove the side support poles from the slot on the front frame of the awning.
6. Store the side support poles back into the aluminium travel cover.
7. Twist to unlock the vertical support poles.
8. Store the vertical support poles in the U-shape groove at the front of the awning.
9. Roll up the awning and store it in the aluminium travel cover.
10. Close the aluminium travel cover and reattach the elastic tabs to secure.



# CARE INSTRUCTIONS

**PLEASE READ ALL OF THE CARE INFORMATION AND INSTRUCTIONS INCLUDED WITH THIS AWNING BEFORE USING IT FOR THE FIRST TIME.**

1. Never store your awning away damp. Should mildew spots appear, brush them off before they become attached. Mildew damage of any kind is not covered by our warranty. **DO NOT** use excess force or other harsh tools to remove soilage from your awning.
2. Like all assets, polyoxford awnings require regular care and attention to give the life and service expected. Regular cleaning with an abundance of clean water and a soft brush, especially after exposure to salt water will preserve your awning's life. Do not allow bird droppings, earth or vegetable matter to remain in contact with the fabric. **NEVER USE SOAPS OR DETERGENTS.**
3. Polyoxford is not fire proof, if exposed to flame or high heat sources it can ignite and burn. Always take care when using spirit or gas appliances such as stoves and lanterns near your awning.
4. Some products contain chemicals, which can destroy your awnings proofing and cause it to leak. Avoid using aerosol sprays and keep petrol, oil, solvents and other similar fluids away from the fabric. Do not use these inside or around your awning as any damage caused by these is not covered by our warranty.
5. Always remember that your awning is made from cloth, and should not be compared with a house. It is waterproof under normal conditions but in severe weather conditions some water may penetrate. If you apply water proofing to your awning check that you are applying the right one for your awning's polyoxford fabric type.
6. Extra pegs and ropes are recommended in stormy conditions. Please note, wind damage is not covered by our warranty. Check and adjust guy ropes and pegs daily.
7. Awning fabrics are not 100% colourfast and some fading will occur naturally, however; this does not affect the performance of the fabric. Do not leave your awning up and unattended for extended periods of time. Awnings are not designed as permanent dwellings. Awnings are guaranteed for normal camping use only.
8. Check all fixtures regularly and tighten when necessary.
9. When rolling up awning, ensure there are no creases or folds in the fabric.



## WARRANTY INFORMATION

**The warranty period for this awning is found on the packaging and full details are on the Kiwi Camping website - [www.kiwicamping.co.nz](http://www.kiwicamping.co.nz).**

The original purchaser of this product is offered a warranty if during this time period the product fails due to a fault in either materials or workmanship. Service under this warranty is available by returning the product, with your proof of purchase, to where it was purchased. If after inspection it is determined that the product is defective, we will repair or replace it (at our discretion) free of charge. This warranty does not cover misuse, damage caused by accident, storm or wind damage, mildew, neglect, UV degradation and fair wear and tear. Please note, the warranty on this awning will be deemed void if the product is used for any purpose other than a temporary shelter. If the claim is not deemed a warranty or is outside its warranty period, we can repair the product at a nominal cost.



Distributed by: Aber Living, Hamilton, NZ  
[www.kiwicamping.co.nz](http://www.kiwicamping.co.nz)

5577-08/23