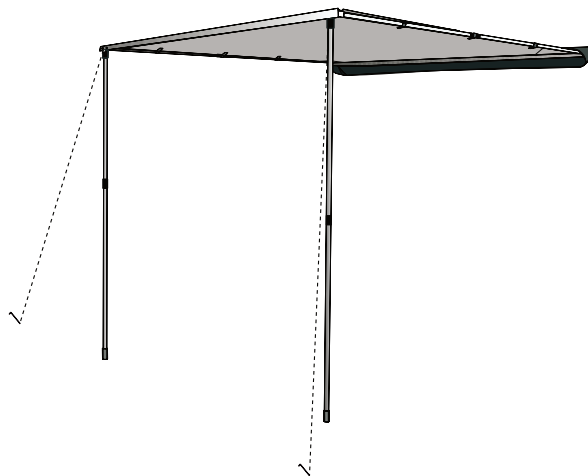




## Tuatara 2.5 x 2.5 Awning

Model No. KC077-001



## SAFETY INSTRUCTIONS

- Regularly check nuts and bolts attaching the awning to your vehicle to make sure fastenings are tight and in good condition.
- If using a commercial car wash, remove awning bag and fixtures to avoid damage.
- Do not use awning or storage bag to hoist, lift or support yourself.
- It is important when mounting the awning to a vehicle, that all the mounting brackets supplied are adequately spaced to support the weight of the awning.
- Products applied to a vehicle roof will alter vehicle handling. The manufacturer disclaims all responsibility in relation to accidents due to improper use, incorrect maintenance, or negligence in maintaining fastening hardware.
- This awning will support Tuatara accessory walls (KC077-006 - Front Wall and KC077-005 - Side Wall). Attaching different models, or inappropriate weight, could damage frame and will not be covered by warranty.
- Do not attempt to put up in windy conditions.
- To avoid pooling of water on top of awning, always set up awning with sufficient angle to allow water to run off.

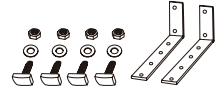
# ATTACHMENT INSTRUCTIONS

## Your Awning includes:

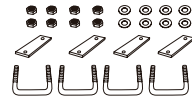
1 x awning and awning bag, 2 x guy ropes and pegs



2 x L-brackets with 4 x bolts, washers and nuts



4 x square U-bolts with 4 x mounting plates with 8 x washers and nuts



4 x 20mmx30mm T-bolts with 4 x washers and nuts



## You will also need:

1 x adjustable spanner

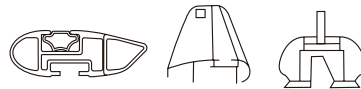
1 x person to help attach awning to vehicle

To connect the awning to a vehicle, first locate the appropriate hardware kit associated with your vehicle's crossbar profile. Select the proper hardware kit by matching the profile shape of your crossbars with one of the two options below:

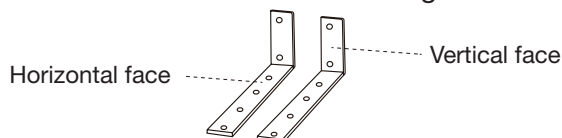
1. U-Shape Bolt



2. T-Slot (two sizes included)



Before proceeding, please familiarise yourself with the L-Bracket. The instructions will refer to the vertical facing of the L-Bracket.



## SQUARE U-BOLT INSTRUCTIONS

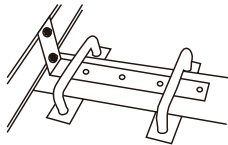


### Secure the L-Bracket to the Crossbars

1. Place supplied L-Bracket on top of your crossbars, with the vertical end facing away from the vehicle.
2. Place Square U-Bolts on top of the L-Bracket with the mounting plate under the crossbar.  
*Tip - The U-Bolt assembly should be 2.5cm apart.*  
*Tip - Ensure vertical faces of L-Brackets are aligned before fully tightening.*
3. Tighten each lock nut evenly while keeping L-Brackets level and aligned.

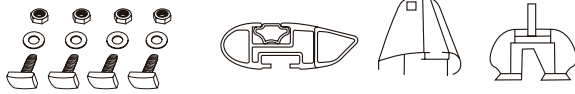
### Attach your awning to the L-Brackets

4. Slide four awning T-Bolts into awning channels, found on the back side of the awning.
5. With a partner, hold Awning up to L-Bracket and align T-Bolt threads with L-Bracket holes on vertical faces.
6. Insert T-Bolts through the L-Bracket holes and tighten the lock nuts with a few turns, without fully tightening.  
*Tip - The Awning T-Bolts should still be able to move back and forth inside the awning channel.*
7. Ensure awning is centered between both crossbars, then fully tighten all lock nuts to secure the awning.



*Tip - It is recommended to take a short drive after attaching fixtures. Check on return to see if any further tightening of brackets is necessary. Check fixtures regularly during use.*

## T-SLOT INSTRUCTIONS

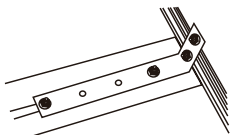


### Secure the L-Bracket to the Crossbars

1. Insert T-Bolts into the channel after removing or depressing rubber strip.  
*Tip - T-Bolt heads should slide back and forth but not fully rotate.*
2. Place L-Bracket on both T-Bolts, providing a minimum of 1 empty hole set in between each T-Bolt.  
*Tip - Ensure vertical faces of L-Brackets are aligned before fully tightening.*
3. Tighten each lock nut evenly.

### Attach your awning to the L-Brackets

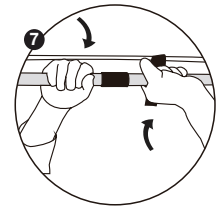
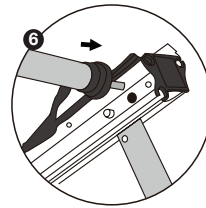
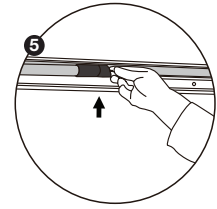
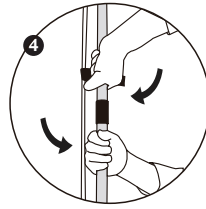
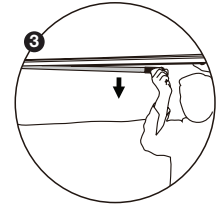
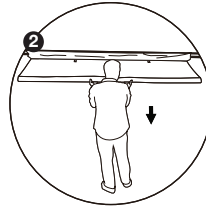
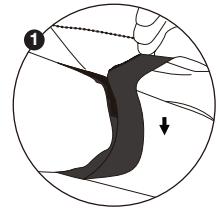
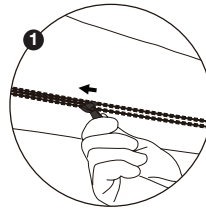
4. Slide four awning T-Bolts into awning channels, found on the back side of the awning.
5. With a partner, hold Awning up to L-Bracket and align T-Bolt threads with L-Bracket holes on vertical faces.
6. Insert T-Bolts through the L-Bracket holes and tighten the lock nuts with a few turns, without fully tightening.  
*Tip - The Awning T-Bolts should still be able to move back and forth inside the awning channel.*
7. Ensure awning is centered between both crossbars, then fully tighten all lock nuts to secure the awning.



*Tip - It is recommended to take a short drive after attaching fixtures. Check on return to see if any further tightening of brackets is necessary. Check fixtures regularly during use.*

# PITCHING INSTRUCTIONS

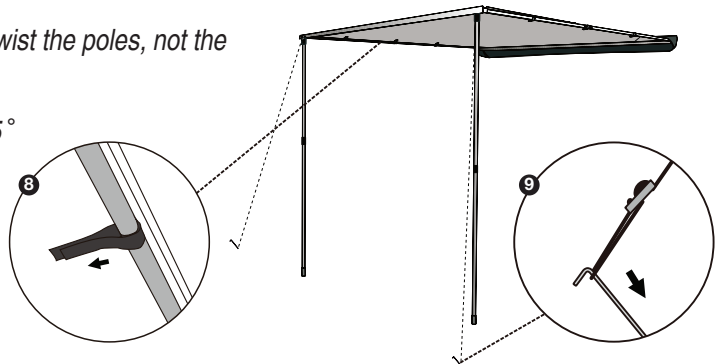
1. Unzip the storage bag, release the hook and loop tabs.
2. Carefully unroll awning.
3. Release both vertical poles from the U-shape groove at the front of the awning and extend.
4. Twist to lock to desired height. Have someone support the front of the awning.
5. Take out the side poles from the U-shape groove.
6. Grasp the side pole and insert the pole tip spigot into the appropriate hole.
7. Twist to lock the side pole into the hole, then walk to the other side and repeat the process.
8. Secure the hook and loop tabs around the side poles.
9. Peg out the guy ropes and pole bases ensuring the awning remains securely anchored.



*Tip - Pitch the awning at a slight angle to allow rain run-off.*

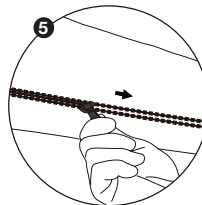
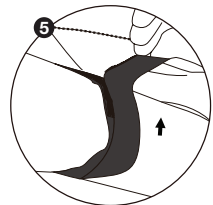
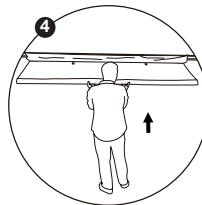
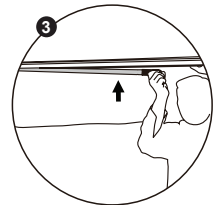
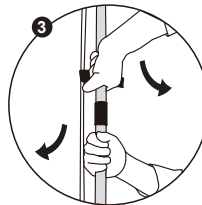
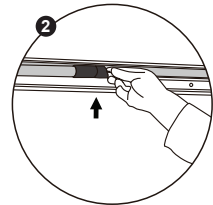
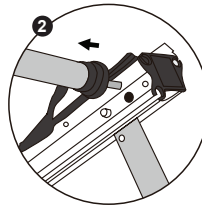
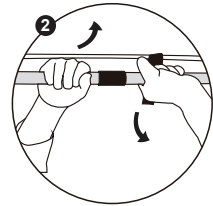
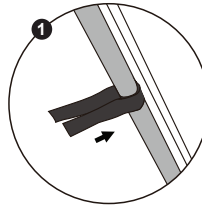
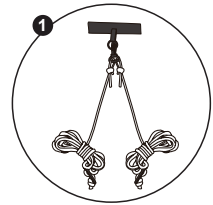
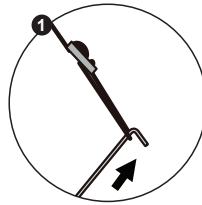
*Tip - To extend poles, twist the poles, not the black joiner.*

*Tip - Insert pegs at a 45° angle to ensure pegs won't pull out.*



# COLLAPSING INSTRUCTIONS

1. Carefully remove pegs, roll-up the guy ropes, remove excess soil from the pegs and store them in their bag. Unfasten hook and loop tabs from side poles.
2. Have someone support the front of the awning. Twist to unlock the side poles and take out from the front hole, then put it back in the U-shape groove.
3. Twist to unlock the vertical poles, then put it back in the front U-shape groove.
4. Roll up the awning and put into storage bag on top of crossbars.
5. Strap the awning with hook and loop tabs to ensure it is secure and then close the zipper.



# CARE INSTRUCTIONS

**PLEASE READ ALL OF THE CARE INFORMATION AND INSTRUCTIONS INCLUDED WITH THIS AWNING BEFORE USING IT FOR THE FIRST TIME.**

1. Never store your awning away damp. Should mildew spots appear, brush them off before they become attached. Mildew damage of any kind is not covered by our warranty. **DO NOT** use excess force or other harsh tools to remove soilage from your awning.
2. Like all assets, polycotton canvas awnings require regular care and attention to give the life and service expected. Regular cleaning with an abundance of clean water and a soft brush, especially after exposure to salt water will preserve your awning's life. Do not allow bird droppings, earth or vegetable matter to remain in contact with the fabric. **NEVER USE SOAPS OR DETERGENTS.**
3. Polycotton canvas is not fire proof, if exposed to flame or high heat sources it can ignite and burn. Always take care when using spirit or gas appliances such as stoves and lanterns near your awning.
4. Some products contain chemicals, which can destroy your awnings proofing and cause it to leak. Avoid using aerosol sprays and keep petrol, oil, solvents and other similar fluids away from the fabric. Do not use these inside or around your awning as any damage caused by these is not covered by our warranty.
5. Always remember that your awning is made from cloth, and should not be compared with a house. It is waterproof under normal conditions but in severe weather conditions some water may penetrate. If you apply water proofing to your awning check that you are applying the right one for your awning's polycotton canvas type.
6. Extra pegs and ropes are recommended in stormy conditions. Please note, wind damage is not covered by our warranty. Check and adjust guy ropes and pegs daily.
7. Awning fabrics are not 100% colourfast and some fading will occur naturally, however; this does not affect the performance of the fabric. Do not leave your awning up and unattended for extended periods of time. Awnings are not designed as permanent dwellings. Awnings are guaranteed for normal camping use only.
8. Check all fixtures regularly and tighten when necessary.
9. When rolling up awning, ensure there are no creases or folds in the fabric.

## **WARRANTY INFORMATION**

**THE WARRANTY PERIOD FOR THIS TENT IS FOUND ON THE PACKAGING AND FULL DETAILS ARE ON THE KIWI CAMPING WEBSITE - [WWW.KIWICAMPING.CO.NZ](http://WWW.KIWICAMPING.CO.NZ).**

The original purchaser of this product is offered a warranty if during this time period the product fails due to a fault in either materials or workmanship. Service under this warranty is available by returning the product, with your proof of purchase, to where it was purchased. If after inspection it is determined that the product is defective, we will repair or replace it (at our discretion) free of charge. This warranty does not cover misuse, damage caused by accident, storm or wind damage, mildew, neglect, UV degradation and fair wear and tear. Please note, the warranty on this awning will be deemed void if the product is used for any purpose other than a temporary shelter. If the claim is not deemed a warranty or is outside its warranty period, we can repair the product at a nominal cost.



Distributed by: Aber Living, Hamilton, NZ  
[www.kiwicamping.co.nz](http://www.kiwicamping.co.nz)

5214-06/20