



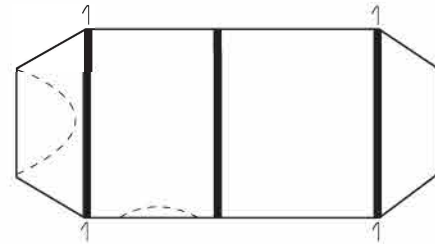
**Kingfisher 4 Air
Recreational Tent**
Model No. KC072-447

PITCHING INSTRUCTIONS

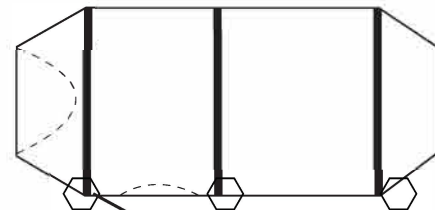
Your tent includes:

- 25 x steel pegs (5mm)
- 10 x ropes
- 1 hand pump

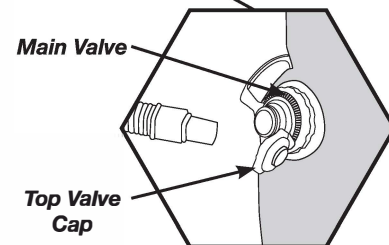
1. Select a dry, level site and clear the ground of any sharp objects. Remove the tent, pegs and pump from the carry bag. Unclip and unroll the tent.



2. Pitch so the tent is in line with wind, never side on. Spread out the tent and peg out the four main corners ensuring the tent is pulled taut and square. Then peg out the remaining pegging points.

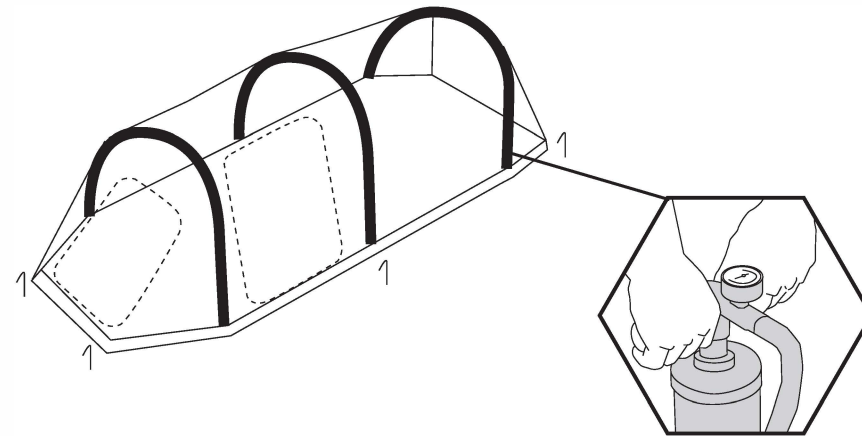


3. Attach the pressure restrictor to the hand pump. Locate the air valves on the right-hand outer side of the tent.



To make sure the tent stays in place insert the pegs into the ground at a 45° angle, not straight down.

4. There is an external valve located on each air tube. Before inflating, the valves need to be screwed into the air tube.
5. Unscrew the top valve cap. Insert the pump hose into the valve and inflate the air tubes from the centre tubes outwards. You may need to help the tube stand up so it inflates evenly and in the correct shape. Make sure you only inflate to the recommended pressure (6-8psi) as over-inflation can lead to tube damage. Screw the top valve cap back on after inflating each air tube. Only use the pump provided as it has a pressure gauge which shows the recommended pressure.



6. It is recommended in hot weather that 6psi is used to allow for the air to expand inside the air tubes. In cooler/windier conditions 8psi is recommended. Please adjust the pressure in the air tubes as the ambient temperature changes. Only use the pump provided as it has a pressure gauge which shows the recommended pressure (psi).

7. Making sure the tent is sitting evenly, peg out the remaining pegging points on the floor and ventilation ports. You may need to adjust the base of each air pole so it sits flat with the ground.
8. Rope out the guy ropes and fine tune the tent so it remains taut and positioned correctly.

9. Please read the care instructions for more product information about your tent.

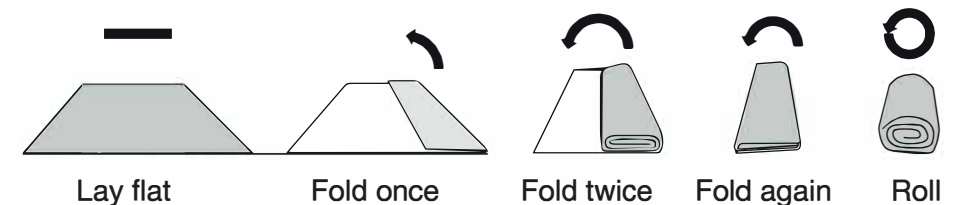


REVERSE THE PROCEDURE TO LOWER THE TENT

PACKING INSTRUCTIONS

Unzip doors and windows. Pull out the pegs, leaving the four corner pegs in. Unscrew the main valves and deflate the air tubes. Make sure all the air escapes by forcing the air out toward the valves. Remove the remaining pegs. Fold the tent as shown below, ensure that the air valves are not obstructed to allow the remaining air to escape. To reduce the chance of valve malfunction, the valves should be fully unscrewed when the product is in storage.

Ensure the tent is completely dry and clean before storing away and store it in a dry environment.



TENT CARE INSTRUCTIONS

PLEASE READ ALL OF THE TENT CARE INFORMATION AND INSTRUCTIONS INCLUDED WITH THIS TENT BEFORE USING YOUR TENT FOR THE FIRST TIME.

1. Before you use your new tent, fully unpack and pitch it at home. It is important to familiarise yourself with the set-up procedure and the various features.
2. Select a site that is level, clear of any sharp objects, is dry, will drain well if it rains and is protected from wind and other elements.
3. Keep clear of overhead power lines and trees when setting up your tent.
4. For best and easiest results, enlist the help of at least one other person to assist in pitching the tent.
5. Keep all flame and heat sources away from this tent fabric. Do not use open flame or gas appliances in or near your tent.
6. Do not use aerosol sprays or any solvent-based products in or around your tent as these could damage the fabric or special coatings. These products include but are not limited to: repellent spray, hair sprays, alcohol, detergents, fly spray, petrol, kerosene etc.
7. Please note, the warranty on this tent will be deemed void if the product is used for any purpose other than a **temporary, recreational** use shelter.
8. Especially in windy conditions, it is essential that you attach guy ropes and fasten them to the ground. We suggest you insert the pegs into the ground at a 45° angle towards the tent, not straight down. Please note, your tent will not be covered under warranty if wind damage occurs.
9. Use all of the guy ropes and pegs included to ensure your tent is secure and to prevent damage to both yourself and the tent. Check guy ropes/pegs daily.
10. When closing the doors, hold the flaps up to take pressure off the zips. Ensure that the tent fabric is never overstretched, especially

as this may cause problems with the internal doors.

11. To clean your tent, only ever use a soft sponge and warm water. DO NOT use excessive force or other harsh cleaners to remove marks from tent.
12. Ensure the tent is completely dry and clean before storing away and ensure to store it in a dry environment.
13. Please note that the valves used on this product rely on a good air seal which can fail and become ineffective if left under compression whilst in storage. To reduce the chance of valve malfunction, the valves should be fully unscrewed when the product is in storage. Replacement valves are available from your stockist.
14. Please note, that the inflatable bladders are not repairable. Spare inflatable bladders are available to purchase from your stockist.
15. Changing atmospheric conditions can make the air tubes appear to lose or in some cases gain pressure. Commonly caused by rising or lowering in ambient temperature. Should this occur, the tube will simply require either a topup or release of excess pressure. It should NOT be considered a sign of leakage or puncture. However, where leakage is suspected, you should firstly inspect the valve to ensure that no parts are cross-threaded and that the air seals are in good condition and tight. Removing a valve then re-fitting and re-inflating may help. If you discover that a valve has become faulty or a bladder has developed a leak, spares are available to purchase from your stockist.

IMPORTANT:

1. Under certain conditions (cold weather, high humidity etc.) condensation may form on the inside of your tent fly. Condensation can occur for many reasons including vapour from your breath, perspiration, cooking nearby or wet clothing inside your tent. This does NOT mean your tent is leaking through the fabric. You can minimise condensation by opening windows and airing out your tent during the day and by removing any wet clothing/towels etc.

2. Try to avoid pitching your tent under trees as tree limbs, falling leaves, sap, bird droppings or excess water dripping from the trees can cause damage to the tent fabric and its special coatings resulting in leakage or discolouration.
3. Only remove the tent pegs by pulling on the peg itself. NEVER pull on the tent or the webbing loops to remove pegs as it could result in damage to the tent or personal injury.
4. DO NOT leave tent pitched for weeks at a time as extended exposure to the sun's ultraviolet rays can damage and/or cause it to discolour. Your tent will not be covered under warranty if you leave it up for many weeks at a time.
5. STORAGE:
NEVER store your tent wet or dirty (even for short periods of time). NEVER store your pegs or poles inside your tent. Always use the separate bags they are supplied in.
6. You may want to insure your tent against loss or damage.

WARRANTY INFORMATION

The warranty period for this tent is found on the packaging and full details are on the Kiwi Camping website - www.kiwicamping.co.nz.

Key points:

The original purchaser of this product is offered a warranty if during this time period the product fails due to a fault in either materials or workmanship. Service under this warranty is available by returning the product, with your proof of purchase, to where it was purchased. If after inspection it is determined that the product is defective, we will repair or replace it (at our discretion) free of charge. This warranty does not cover misuse, damage caused by accident, storm or wind damage, mildew, neglect, UV degradation and fair wear and tear. Please note, the warranty on this tent will be deemed void if the product is used for any purpose other than a temporary shelter. If the claim is not deemed a warranty or is outside it's warranty period, we can repair the product at a nominal cost.



Distributed by: Aber Living, Hamilton, NZ
www.kiwicamping.co.nz

5359-04/22